



Update

Spring 2025

Peek into the labs of your peers

- ▶ Stable supply and high quality is key to consistent results
- ▶ Seeing cells in context unlocks new possibilities
- ▶ Small size - big help
- ▶ High-quality qPCR data with unmatched precision

Table of content

Service and maintenance	3
Stable supply and high quality is key to consistent results	4
Seeing cells in context unlocks new possibilities	5
More than 200 units in the Nordics	6
Get the best of two worlds – ELISA and PCR	7
Unlocking Immune Profiling: Success with BCR and TCR Kits in Turkey	8
Small size - big help	9
High-quality qPCR data with unmatched precision	10
Working with cell culture?	11
See clearly with automated ELSIA solutions	12
Highly rated, trusted by scientists worldwide	13
New products and suppliers	14
Spring offers on favorites from Eppendorf	15

Service and maintenance

Make sure that your instrument performs at its best at all times. Preventive maintenance will ensure that your instrument delivers accurate results at each run. Get the most out of your instrument and prolong its lifetime.

Service that meet your needs

Depending on your needs and your budget, you can choose between different service agreements for our most popular instruments. Annual maintenance could be all you need, or maybe you wish to have the added security of knowing your instrument can always stay optimized - we have the agreement for you.

- PCR and qPCR instruments
- Standard Biotoools genomics instruments
- Minicore micro tissue arrayer
- Thermo Fisher and Agilent autostainers
- UVP instruments for gel documentation
- Azure instruments for gel documentation
- Glite instruments for gel documentation
- BSD instruments
- Pipettes
- Eppendorf centrifuges, thermomixers, heat sealers, PCR instruments and transformation instruments

If you need service for an instrument that is not on this list, please do not hesitate to contact us. We may be able to provide you with the service.



On-site or off-site repairs

Choose between on-site repair or our repair center depending on the situation and your lab schedule.



Fast response time

With our fast response time, you can get back to your lab work in no time.



Certified service

We know every little detail of the instruments after having worked with them for several years. In addition, we regularly get training directly from our suppliers, where we learn more about existing and new products.

Spare parts

Do you need a rotor for your Eppendorf centrifuge? Or a new power supply for your UVP imager? We can provide you with spare parts from more than 35 suppliers.

Relocating instruments

Many instruments require delicate handling. Let our Field Service Engineers help you move the instrument – and re-install it, when needed.



One point of contact

Whether you need remote troubleshooting guidance or to make a service appointment, you have one point of contact at AH diagnostics. Call us at +45 87 45 90 10 or write us at service@ahdiagnostics.com.



Service

A Field Service Engineer will perform the preventive maintenance or repair either on-site or at our repair center depending on the situation and your lab schedule.



Service report

Following the service visit, you will receive a report by email with the results of the preventive maintenance or repair.

Stable supply and high quality is key to consistent results

Transparency and stability is vital when working with media and sera in cell culturing. Knowing exactly what is in the product you are using for your experiments, can have a great impact on the results you can produce and rely on. This is something Maria L. Pedersen from University of Southern Denmark can attest to.

Research focus

"We are working to identify which drug compounds interact with transport proteins in the cell's various membranes. Within transport proteins, two groups are particularly relevant in a pharmaceutical context:

- *Solute Carriers are transport proteins that move substrates including nutrients, ions and drugs in and out of the cell based on the direction of the gradients.*
- *ABC transporters transport compounds across a membrane while consuming cellular ATP.*

Both SLCs and ABCs can affect how a drug compound is absorbed, for example from the intestine, but also how a compound enters the brain, kidneys or liver.

Our studies are primarily based on cell models, and we have a wide range of human or animal origin, which are isolated from different tissues. This makes it possible to investigate how transport proteins contribute to compound transport in different tissues, but also which transport proteins are expressed and how they change their amount and response under various impacts."



Maria L. Pedersen, Laboratory Technician,
Department of Physics, Chemistry and Pharmacy, Faculty of Science, University of Southern Denmark
More than 20 years of experience in the cultivation of more than 60 different mammalian cell lines.



Cell culture

"It is extremely important for us to have basic media and supplements with known formulation and concentration so we can ensure our research meets the highest international standards.

For our experiments, it is crucial to design the right media composition to grow the individual cell line under optimal conditions to achieve cell proliferation, polarization and differentiation and to ensure reproducibility. For many transporter proteins, they are only fully expressed in the membrane in highly specialized cells.

The cell culture area is extremely sensitive to changes, which is why we test variants of basic media, supplements, perform serum batch tests and examine materials including culture flasks, membrane inserts, etc. from many brands for optimal culture conditions.

We need a stable supply of high-quality products, which is why we have tested and selected the AH diagnostics product line from Dominique Dutscher and SPL."

Products to support your workflow

Fetal Calf Serum



Batch test for FREE and we'll stock your batch for 2 years!

Different origins and sizes available

Classical media & buffers



Choose from our large range of optimized cell culture media formulations, including classical media DMEM, RPMI-1640, Stam cell optimized media and serum-free options for all your cell culturing needs.

Seeing cells in context unlocks new possibilities



Dr. Jackson, an investigator at the Lunenfeld-Tanenbaum Research Institute, Sinai Health, studies cancer at the single-cell level, focusing on how the tumor microenvironment drives disease progression and resistance. Before founding his lab, Jackson worked with the team that pioneered high-plex single-cell analysis using Imaging Mass Cytometry™ (IMC™).

How spatial biology is changing science and medicine

Spatial biology is revolutionizing precision medicine by enhancing our understanding of cell behavior, disease progression, and future states.

Dr. Jackson integrates IMC into his research at Sinai Health to study cancer's progression at the single-cell level. His work has contributed to breast cancer research and is advancing methods for tissue imaging and precision medicine.

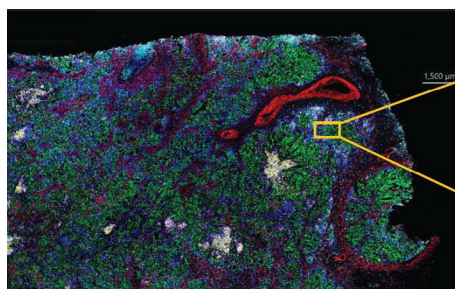
Recently, his lab received a grant from the Canadian Cancer Society for a project focusing on low-survival cancers using IMC to accelerate clinical trials.

The potential of spatial biology

Spatial analysis uncovers cellular and architectural changes associated with disease, offering valuable insights into disease initiation and progression.

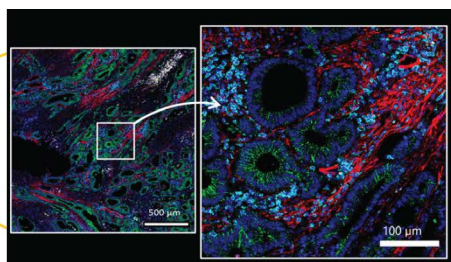
Jackson emphasizes that incorporating spatial information into single-cell technologies is crucial for understanding human disease variability.

Hyperion XTi



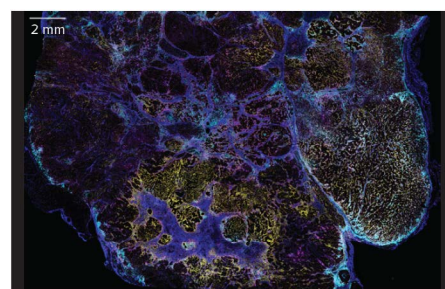
Preview Mode*

Number of markers: 42
Acquisition time: 20 minutes
Sample: colon cancer (25 mm x 15 mm)



Cell Mode*

Number of markers: 42
Acquisition time: 2 hours
Sample: colon cancer (2 mm x 2 mm)
Resolution: 1 µm



Tissue Mode*

Number of markers: 42
Acquisition time: 5 hours and 50 minutes
Sample: breast cancer (24 mm x 16 mm)
Resolution: 5 µm

The advantage with IMC's

IMC allows for thorough analysis of all cells in a sample, including fibrosis and extracellular matrix targets, which other technologies like sequencing cannot measure. This capability helps find rare or complex events and broadens the range of patient samples that can be analyzed.

IMC enables the analysis of smaller, archived samples, overcoming limitations of other technologies that require fresh samples. This accelerates research by allowing studies with a wide variety of samples, including those from biobanks. Jackson explains that using less material still provides a wealth of information, especially for small biopsies.

Context matters

Spatial information is key to understanding immune cell interactions within tumors, shedding light on immunotherapy resistance. Jackson highlights how IMC helps examine cell localization and interactions, providing a more holistic understanding of cancer biology. By expanding measurement capabilities, IMC reveals new dimensions in molecular and cellular biology, offering a comprehensive view of biological systems.



Dive into spatial biology and read the full article

SCAN or CLICK

*Images are not representative of the mentioned study

The spectrophotometers and cell counters from Denovix are a popular staple in the Nordic labs. The small instruments with powerful capabilities are designed for life scientists, by life scientists and provide high-quality and reliable results, making it an easy choice for more than 200 labs across the Nordics.

Researchers say they love the industry-leading performance, intuitive interface, and flexible connectivity.

DeNovix DS-Series

The Denovix DS-11 series is a cutting-edge, high-performance spectrophotometer designed to deliver precise, rapid, and reliable results in nucleic acid and protein quantification.

Engineered for life sciences, biotech, and clinical research, the DS-11 series offers exceptional accuracy with its advanced optics and user-friendly interface. With its ability to measure a wide range of sample types - including low concentrations - this instrument ensures consistent and reproducible results every time.

The DS-11 series is ideal for users looking to streamline their workflows and enhance productivity, all while minimizing sample volumes. Its compact design, powerful capabilities, and intuitive software makes it an indispensable tool for researchers and labs seeking top-tier performance in nucleic acid and protein analysis.



Combined 1 uL UV-Vis and Fluorescence quantification in one compact bench-top instrument. Multiple models with ability to select the measurement modes desired.

Easy-to-use products Rapid and reliable results Maintenance-free design

DeNovix CellDrop™

The Denovix CellDrop is a revolutionary cell counter designed to streamline your research and cell analysis workflows. Combining advanced technology with user-friendly features, the CellDrop delivers accurate, reproducible cell counts in seconds. It uses cutting-edge fluorescence-based technology to provide precise cell concentration measurements, even for low-density samples.

Whether you are working with adherent or suspension cells, the CellDrop ensures fast, reliable results with minimal sample volume and no need for expensive reagents or hemocytometers. With its intuitive touchscreen interface and cloud-based data management system, it simplifies your research process, helping you to save time and reduce errors.

Ideal for researchers, cell biologists, and labs of all sizes, the Denovix CellDrop is your go-to solution for efficient and accurate cell counting.



DirectPipette™ Technology eliminates the need for slides and eliminates plastic waste from cell counting workflows. Offered in Dual Fluorescence plus Brightfield or Brightfield only modes.

Products to support your workflow

Single-use cuvettes



dsDNA/RNA Assay Kits



Different kits available

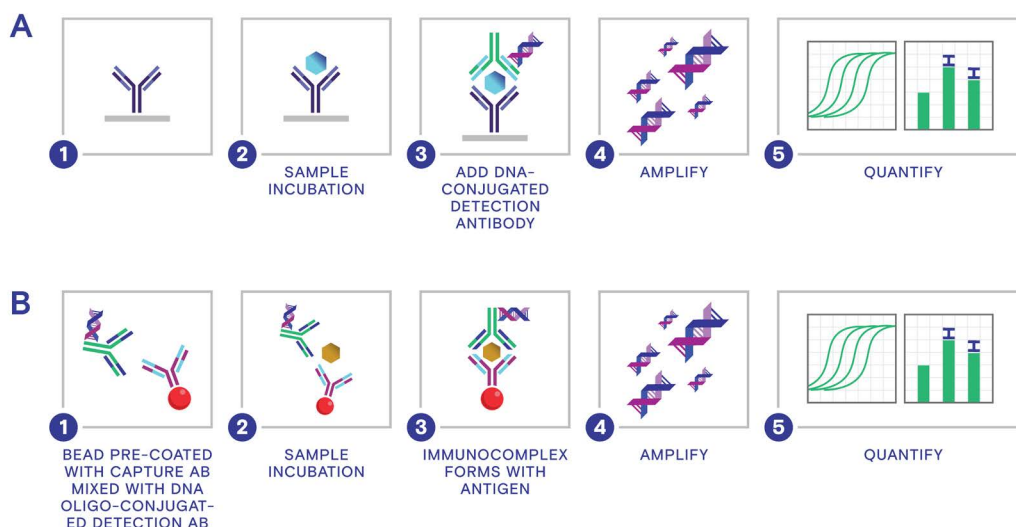
Low binding microtubes



Achieve higher sensitivity than is possible using a standard ELISA with RayBiotech's Immuno-Quantitative PCR ELISA (IQELISA) and Bead-based Immuno-Quantitative PCR ELISA (NexaTag).

What is an Immuno-PCR Assay?

The IQELISA and NexaTag are immuno-PCR assays that combine the specificity and ease of use of an ELISA with the sensitivity of real-time PCR (RT-PCR, also referred to as quantitative PCR or qPCR), providing you with a detection platform that uses familiar ELISA workflows while pushing the frontiers of your detection limits and sample volume requirements.



The benefits of an immuno-PCR kit over a standard ELISA

- Up to 1000x more sensitivity —As with all ELISAs, assay sensitivity depends on the sensitivities of the antibodies being used. However, the lowest limits of quantification (LLOQs) of IQELISA are, on average, 23-fold lower than standard ELISA with the same antigen-antibody pair and can get up to 1000-fold lower for NexaTag.
- Low sample consumption. sELISA requires 100 µL of working sample volume per well, IQELISA uses 25 µL and NexaTag uses only 5 µL.
- Melting curve option. Allows the user to determine if high background was caused by external contamination.

	Standard ELISA	IQELISA	NexaTag
Substrate	96-well microplate	96-well PCR plate	Beads
Detection method	Colorimetric	PCR	PCR
Instrument	Plate Reader	qPCR instrument	qPCR instrument
Sample per rep.	50 µl	12.5 µl	2.5 µl
Working vol. per rep.	100 µl	25 µl	5 µl
Sensitivity	++	+++	++++
Cost	\$	\$\$	\$\$+



Develop your own Immuno-PCR with Oligonucleotide Conjugation Kit

- Less than 20 minutes of on-hand time
- Up to >90% conjugation efficiency
- For 100 ug antibody and a control

Service - Let the experts at RayBiotech do the assay for you

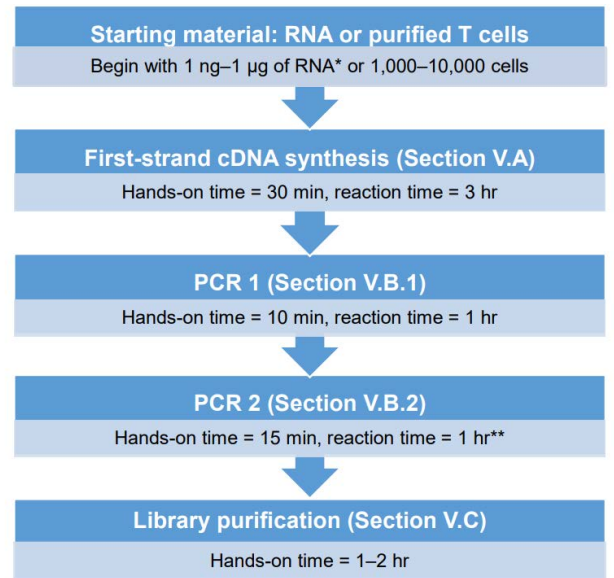
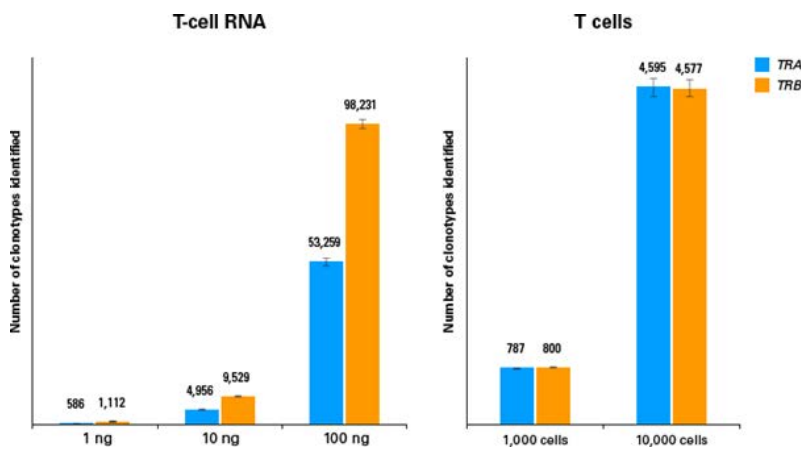
Send us your samples for immuno-PCR, and we'll send results! For ultrasensitivity, try our Simoa® single molecule array. Contact us for a quote or more info.

Researchers in Turkey have made significant strides in immune repertoire sequencing using Takara Bio's BCR and TCR Profiling Kits. By employing the SMARTer Human TCR α/β and BCR IgG/H/K/L Profiling Kits, the team conducted an in-depth analysis of T-cell and B-cell receptor repertoires, providing valuable insights into immune system dysregulation and responses in patients with immunodeficiencies.

The power of Takara Bio's kits

These high-performance kits enabled the team to:

- Generate high-throughput sequencing data with unparalleled sensitivity.
- Perform comprehensive immune profiling of TCR (TRA, TRB) and BCR (IgH, IgK, IgL) chains.
- Use Cogent NGS Immune Profiler to analyze the sequencing data, allowing precise identification of immune cell clonotypes and diversity.



*depends on source of RNA (RIN \geq 8)
**depends on number of cycles

Figure 1. Protocol overview and timeline.

Advance your understanding of immune dysregulation

Application to immune Disorders

One of the key applications of these kits was in understanding immune repertoire abnormalities in patients with STAT3 gain-of-function (GOF) mutations. The study demonstrated that patients exhibited restricted TCR diversity and increased self-reactive T-cell clones, contributing to autoimmune complications.

Additionally, the research revealed:

- A shift in naïve and memory T-cell populations post-treatment.
- Significant transcriptomic changes, with normalization of previously dysregulated immune genes.

Products to support your workflow

Microcentrifuge for PCR plates

NucleoMag NGS Clean-up and Size Select

Library Quantification Kit



Small package - big help

Introducing the MagnetaPure Mini, the next evolution in nucleic acid purification! This compact, fully automated system is designed to deliver powerful performance in a size that's just one-fourth the size of traditional nucleic acid extractors. Despite its smaller footprint, the MagnetaPure Mini offers the same robust performance you expect, meeting the extraction needs of common nucleic acid reagents with ease.

We highly recommend pairing it with the high-quality NucleoMag kits from our trusted partner Macherey-Nagel for optimal results.

What sets the MagnetaPure Mini apart?

It's not just about size—it's about convenience and innovation. With unlimited data transmission, you can remotely control, edit, and monitor your extraction process through the mobile app. Real-time program edits and live logs give you full control from anywhere, whether you're in the lab or on the go.

Many of our customers have already discovered the power of the MagnetaPure Mini. Whether for in-lab use or field applications, they love the compact design and impressive capacity.



Demo available

Here's what the customers are saying:

- *"The only automatic purification system small enough to fit perfectly in our lab."*
- *"Compact yet rugged enough to take it wherever it's needed."*
- *"Easy to use with an intuitive interface—no special training required."*
- *"Incredible value—surprisingly low price for such time-saving, reproducible results."*

Experience the future of nucleic acid purification.

Choose the MagnetaPure Mini for unparalleled performance, flexibility, and convenience.

Products to support your workflow from Macherey-Nagel



NucleoMag Magnetic bead kits



Several kits available for your need

NucleoMag prefilled plates



Do you have a bigger throughput?

MagnetaPure 32+



Cat. no. 255744

MagnetaPure 96



Cat. no. 255745

High-quality qPCR data with unmatched precision



The Biomark™ X9 system is the latest edition of the popular and well-known qPCR technology from Standard Biotoools. Since 2008 the technology has become a popular platform in laboratories around the world, and provides hands-free, automated insights for their research; the reason why Nordic Laboratories chose this solution for their lab.

Advancing precision healthcare



Nordic Laboratories was founded more than 25 years ago and is a leading global laboratory test distributor recognised worldwide for quality, innovation and reliability.

The laboratory in Finland was founded in 2018 and is the partner of choice for various types of DNA extraction and qPCR projects in Europe. The ISO 15189-compliant laboratory offers both one-time services and long-term collaborations and the dedicated Helsinki team executes an array of molecular biology related projects, including DNA extraction and qPCR, professionally and with rapid turnaround times (typically 3-5 days).

The company upholds the highest standards of quality, rigorously assessing laboratory processes, ensuring independent oversight, and maintaining strict quality control measures. This commitment guarantees precise, reliable and clinically relevant results for healthcare providers and patients worldwide.

In 2023, Nordic Laboratories enhanced its capabilities by integrating Standard BioTools' Biomark™ qPCR platform. After extensive internal evaluation, Biomark was selected for its exceptional ability to generate high-quality data with unmatched precision and reliability. The platform allows the analysis of up to 9,216 individual reactions per run, even with limited sample sizes. With this advanced technology, Nordic Laboratories is setting new standards in functional medicine, providing practitioners and patients with deeply personalized, accurate, and impactful information.

Precision, speed, and versatility in PCR-based genomics

Biomark™ X9, based on microfluidics, transforms genomic research by delivering comprehensive and scalable PCR-based analysis. This intuitive platform enhances productivity with minimal effort, enabling you to generate timely, actionable insights that drive breakthroughs in genomics. The Biomark™ X9 System is the only fully automated, walk-away solution for PCR, qPCR, and NGS library preparation. By eliminating tedious, hands-on workflows, it accelerates genomic discovery while requiring fewer personnel and less manual intervention. This benchtop platform generates data faster than other technologies, delivering up to 9216 unique nanoliter-scale reactions in a single run.

The perfect match for your research

Biomark technology is widely used across multiple research fields, including agrigenomics, gene expression, genotyping, pharmacogenomics (PGx), sample identification, pathogen detection, and quality control. We are happy to provide references for your specific research needs.



Products to support your workflow

Cielo™ real-time PCR system



Read more on p. 13

DS-8X Eight channel spectrophotometer



DNA and PCR workstation



Working with cell culture?



From basic research to drug discovery, the CELLESTIAL range is ideal for analysis of intracellular dynamics with high spatial and temporal resolution for targets, pathways, cell signalling, reactive oxygen species (ROS(RNS)) detection, apoptosis, cell viability, and organelle functions.

Wide selection of assays or targets

- Organelle detection
- Cell viability
- Proliferation
- Cell death
- Oxidative stress
- Toxicology
- Cell lineage tracing
- Aggresome & inclusion body detection
- And more...

Analyze on your platform of specialty

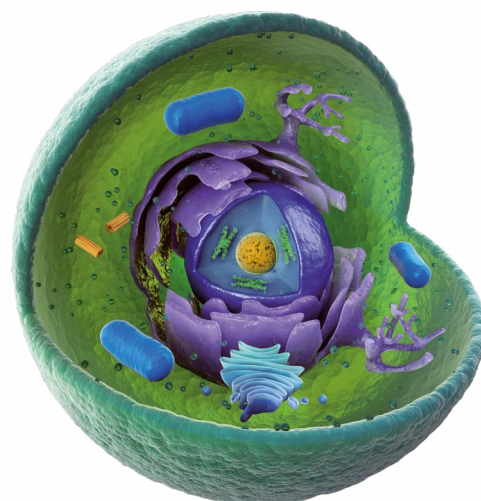
- Flow cytometry
- Microscopy
- Microplate platforms

Visualize cellular structures and responses

The CELLESTIAL portfolio of fluorescent probes and assay kits for cellular analysis provides a complete set of tools for monitoring cell viability, proliferation, death, oxidative stress and toxicology by flow cytometry, microscopy and microplate platforms.

Assays and probes have been optimized for the most demanding imaging applications including confocal microscopy, wide-field fluorescence microscopy, flow cytometry, and high content screening where consistency and reproducibility are essential.

The photostable fluorescent probes are developed to maximize compatibility with common counterstains and fluorescent marker-expressing cell lines. CELLESTIAL probes allow pharmaceutical and biotech researchers to accelerate their drug development programs through early lead compound identification, lead candidate selection, predictive toxicology and compound characterization. With over 300 assay kits available, we provide the tools needed to advance your research.



Products to support your workflow

Classical media & buffers



Read more on p. 4

Enzo Absorbance plate reader



See clearly with automated ELISA solutions

With this new instrument, DiaSource brings customers excellent technical specifications and a more modern design than previous models. This instrument is widely used in scientific research laboratories, quality inspection bureaus, agricultural and animal husbandry, feed enterprises, food enterprises and other testing fields.

IVDR compliant ELISA plate reader

The ELISA Plate Reader is designed according to the principle of enzyme-linked immunoassay technology. Developed with a vertical 8-channel optical path, it can be used for single and dual wavelength measurement. The advantage is to provide absorbance, qualitative, and quantitative test results.

The instrument has a 10.1-inch LCD display touchscreen for easy use. The ELISA Plate Reader is configured with dedicated computer-side ELISA Microplate Reader analysis software. This software enhances the usability and functionality of the reader with significant improvements made to the results reporting. Moreover, the test results can be displayed, stored, and printed.

Another special feature of this new model is its ability to connect to a LIS (Laboratory Information System). Indeed, you can receive information from patients and then send the results back to the LIS. It also has a function allowing you to create graphs for monitoring Quality Control, access different levels for users and administrators.



Key features and benefits of the ELISA plate reader:

- 10.1-inch large touch screen operation (only used for technical adjustments)
- High precision and accurate results
- Software: Single wavelength and double wavelengths detection methods
- User-friendly software
- Customized layout (horizontal and vertical)
- Detailed monitoring of patients
- Connection to LIS system
- QC Follow-up weekly/monthly
- Restrictive access to users, depending on their status
- Language settings
- IVDR compliant

Wash away your troubles with their ELISA Plate Washer

The user-friendly operating system allows customization of various parameters such as plate type, number of washes, wash solution quantity, plate washing method, suction point, soaking and stirring time.

Its outstanding performance results in residual volumes of less than 1µl, using a 2-point aspiration process to help better achieve these precise results.

An additional benefit is the ability to adjust parameters directly through the software, eliminating the need to open the instrument to make manual adjustments.



Products to support your workflow

ELISA kits



Corticosterone ELISA



Highly rated, trusted by scientists worldwide



More than 5,000 systems around the world and more than 30,000 users globally, Azure Biosystems offers innovative instruments that allow researchers ease-of-use and reliable results in their lab every time. Some of the newer additions to their range include the Sapphire™ FL Biomolecular imager and the Cielo™ real-time PCR system.

Image all the samples you can imagine!

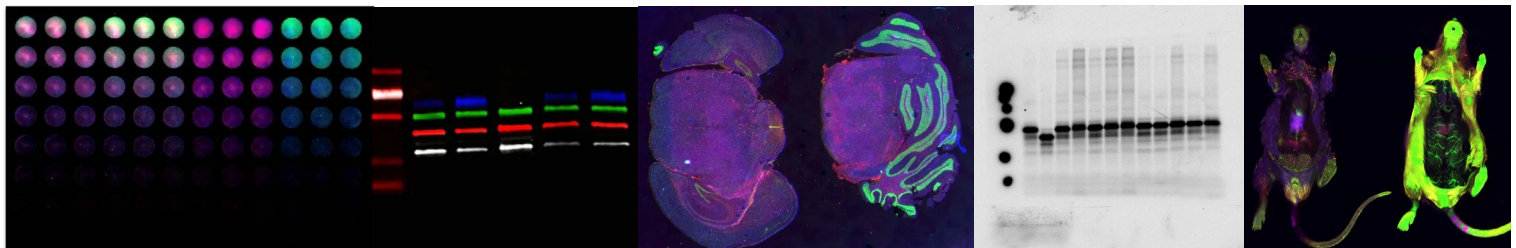
Southern, northern & western blots – Multiplex westerns – Total protein normalization – In-cell westerns
– Cell based assays – Agar plates – Microarrays – DNA & RNA gel imaging – Protein gel imaging –
Multiwell plate imaging – Coomassie – Silver stain – Phosphoprotein studies – Tissue section imaging
– Small animal imaging – Plant bioluminescence imaging

Sapphire™ FL Biomolecular Imager

The next generation of laser scanning systems. The Sapphire FL is the only biomolecular scanner in its class that reaches into the UV spectrum, allowing multiplexing of UV dyes with dyes in the NIR.

It features a unique, patent-pending design of interchangeable and customizable laser and filter modules, enabling a virtually infinite number of spectral combinations. A broad range of excitation and emission wavelengths, as well as phosphor imaging, are supported.

- 5 micron resolution
- Adjustable focus for sample thickness - Z-plane range from -1 to +6 mm
- 5 anaesthesia ports for imaging small living animals
- Near infrared (NIR) and red/blue/green (RGB) fluorescence imaging
- Chemiluminescence detection through the Chemiluminescence Module
- Phosphor imaging



Cielo™ real-time PCR system

Bringing you the accuracy, sensitivity, and reproducibility you demand for your research. Designed to fit the needs of your lab, the Cielo 3 and Cielo 6 allow you the flexibility to select a system that fits both your applications and budget.

- 96-well format for semi-skirted or non-skirted low-profile plates and tubes
- 3 or 6 dye channel filters with LED based excitation for multiplexing
- 12 temperature gradient zones, ramp up rates up to 6.0 °C/sek, 10 - 150 µl
- FAST ~20 minutes runtimes - fiber optic detection system scans 16 wells simultaneously
- Easily export data via Wi-Fi, ethernet, USB or LAN



Demo available

New products and suppliers

In AH diagnostics, we focus on offering products that are at the forefront of scientific and technological development and knowledge. Discover new and exciting suppliers and products!

The simplest, most powerful digital PCR workflow



Nio™ dPCR systems

Stilla Technologies has added two new additions to the Nio™ range. The expanded Nio™ lineup now includes the entry-level Nio™ E and the mid-level Nio™, enhancing accessibility and flexibility for various user-needs.

The Nio™ range offers a simple digital PCR (dPCR) workflow that supports 7 colors and a flexible capacity of 16-768 samples per 8-hour workday.

Nio™ E	Nio™	Nio™ +
All-In-One dPCR system, 7 colors, automation-ready Seamless assay transfer across the Nio™ family		
1 thermocycler		2 thermocyclers
Single plate loading	Multipleplate loading, random access	
1 plate per run Up to 48 samples / run 3 PCR programs / run	4 plates per run Up to 192 samples / run 12 PCR programs / run	8 plate per run Up to 384 samples / run 24 PCR programs / run



The key for successful immunohistochemistry: Know your antibody

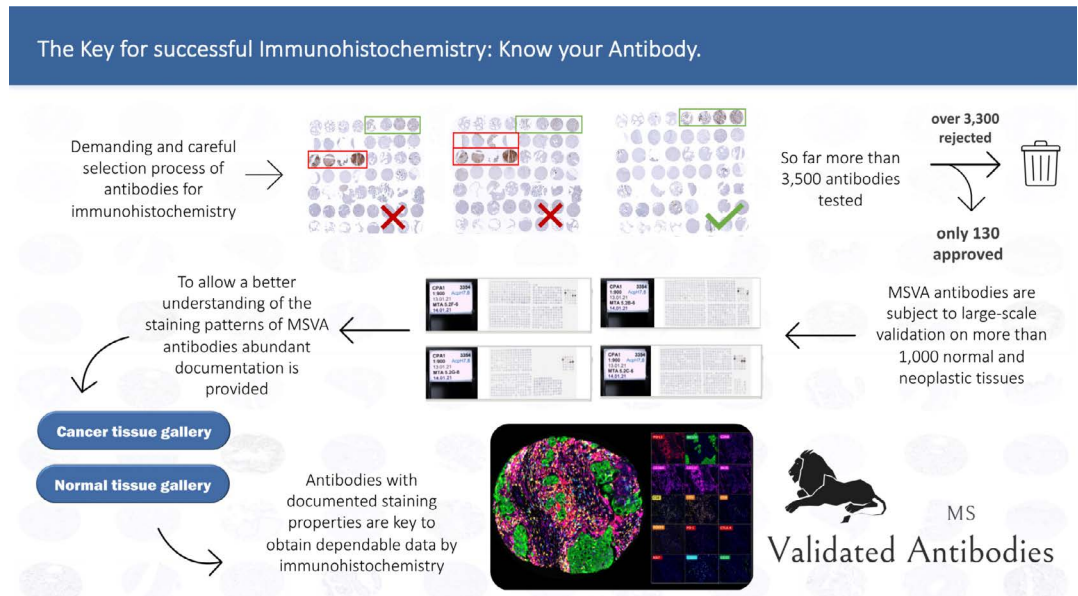


MS Validated Antibodies

MS Validated Antibodies is devoted to delivering optimal monoclonal antibodies for immunohistochemistry and provide the users with a unique product documentation enabling them to know as much as possible about their antibodies.

Key features of the MSVA package include:

- Highly stringent criteria for product selection: Only 150 out of the first 5500 evaluated antibodies were selected for the MSVA portfolio.
- Unique product documentation including images from more than 50 different normal tissues and more than 20 tumor images per antibody.
- Protocol suggestions for manual staining and autostainers (Dako, Leica, Ventana).
- Published data on the performance characteristics of our antibodies are compiled on the MSVA website.
- Extensive educational content is provided for every antibody including links to other relevant sites.



Spring offers on favorites from Eppendorf

Need to upgrade the equipment in your lab?

Safe and stable growth of your cell culture

Eppendorf's CO₂ -incubators and -shaker maintain an optimal environment for cell growth, by providing carbon dioxide control in a humidified atmosphere with constant temperature giving reliable and reproducible results.

► **Save 15% on the reliable incubators CellXpert and New Brunswick S41i**

- CellXpert® incubators: Certified 180 °C sterilization routine, easy cleaning and effective contamination protection
- Uniform atmosphere, low gas consumption and GMP/cleanroom-compatible
- New Brunswick S41i: Versatile CO₂ -incubator and -shaker in one device. Fast routine cleaning and disinfection.
- Max. shaking speed: 25 – 400 rpm



New Brunswick Innova® 40/40R - Benchtop Orbital Shaker

40R (refrigerated) benchtop shakers provide years of dependable operation. A perfect shaker to begin working on small-scale projects with the ability to increase volume or throughput

► **Save 15% on the dependable New Brunswick benchtop shaker**

- Self-supporting transparent lid allows easy samples visualization
- Simple user interface allows for easy programming of speed, temperature, time
- Shake flask volume up to 3 L provide easy upscaling



Dispense with style

Multipette® E3/E3x is ideal for all liquid handling applications. Accommodates more than 5.000 different dispensing volumes between 1µl to 50 mL using different Combitips sizes.

► **Save 15% on the popular electronic Eppendorf dispenser E3/E3x**

- Get the correct volume regardless of viscosity or density of your sample
- Optimal ergonomics to ensure stress- and error-free operation
- 8 dispensing speeds increase reproducibility



Xplorer®/Xplorer® Plus: Level-up Your Pipetting - Go Electronic

Experience a new level of simplicity, precision and reproducibility by upgrading from mechanical to electronic pipetting. Why upgrade?

► **Save 15% on the precise Xplorer® pipettes**

- Digital input of settings and exact piston movement allow for improved user-to-user reproducibility
- Various operating modes are available to increase your efficiency (e.g., "dispensing" to fill plates faster)
- Light-touch buttons for improved ergonomics



Meet your AH diagnostics Specialists

The Nordic Team



The Danish Team



The Swedish Team



The Norwegian Team



The Finnish Team



The Service Team



We are happy to help you find the best solutions for your laboratory.

Please contact us or visit our website to get started!



SCAN or CLICK

AH diagnostics

AH diagnostics A/S • Gammel Viborgvej 11A • DK-8381 Tilst • Tel.: +45 8745 9010 • ahdiagnostics@ahdiagnostics.dk • www.ahdiagnostics.dk
AH diagnostics AB • Solna Torg 19 • SE-171 45 Solna • Tel.: +46 (0)8 680 0845 • ahdiagnostics@ahdiagnostics.se • www.ahdiagnostics.se
AH diagnostics AS • Postboks 4499 Nydalen • NO-0403 Oslo • Tel.: +47 2323 3260 • ahdiagnostics@ahdiagnostics.no • www.ahdiagnostics.no
AH diagnostics Oy • Karhumäentie 3 • FI-01530 Vantaa • Tel.: +358 (0)10 325 3000 • ahdiagnostics@ahdiagnostics.fi • www.ahdiagnostics.fi



Offers are valid until 30th of June, 2025. Offers can not be combined with any other discounts. We are not liable for typographical errors.